

LIV ASK
PRODUCTION DESIGNER

PORTFOLIO 2023

SET CONSTRUCTION

IN STUDIO & ON LOCATION



THE PLAYLIST
2021
SET CONSTRUCTION @ AUDEJAS STUDIO WAREHOUSE LITHUANIA



FLYKTEN TILL FRAMTIDEN
2015
SET CONSTRUCTION @ STUDIO FARES SWEDEN



YOUFOODZ TVC
2017
SET CONSTRUCTION @ TASTY STUDIOS AUSTRALIA



MAX ANGER: WITH ONE EYE OPEN
2020
SET CONSTRUCTION @ KINO STUDIO LITHUANIA



THE PLAYLIST
2021

SET CONSTRUCTION @ AUDEJAS STUDIO WAREHOUSE LITHUANIA



RED TERROR
2007
SET CONSTRUCTION ON LOCATION AUSTRALIA



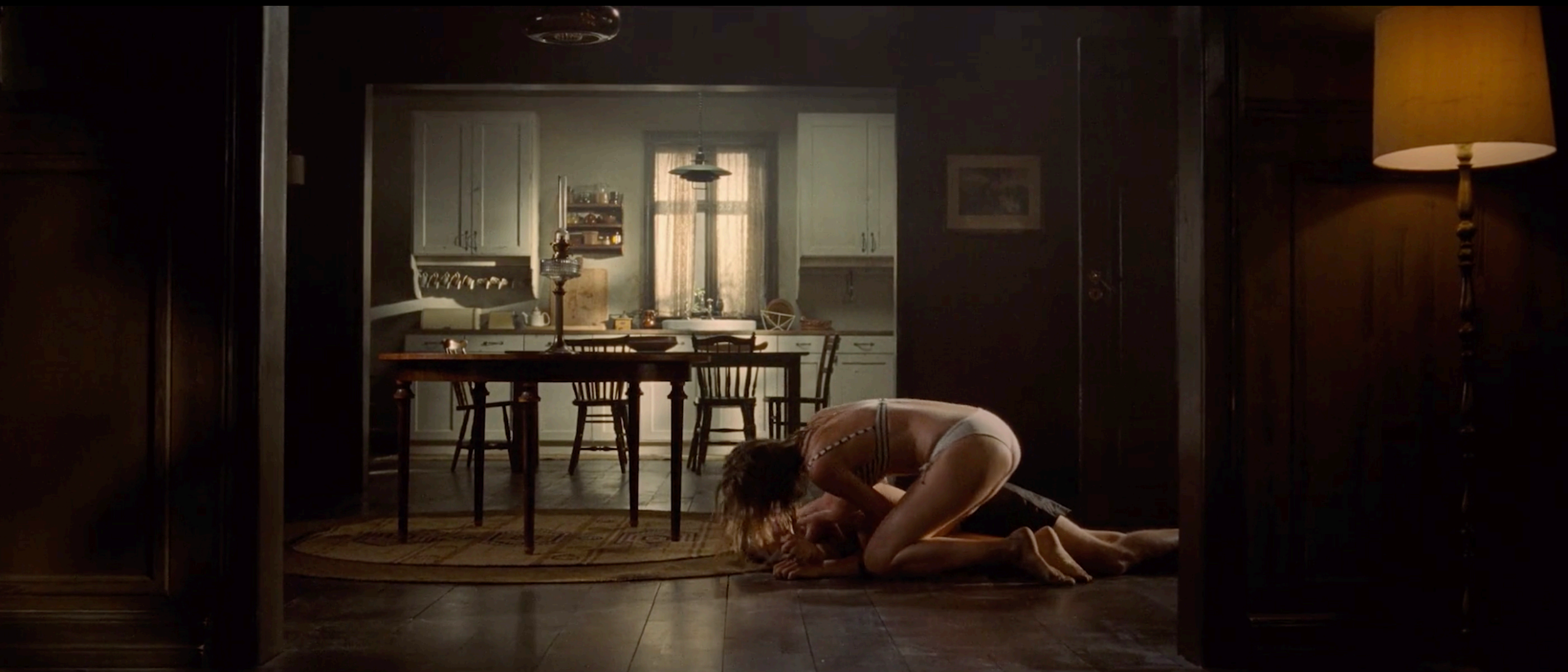
THE PLAYLIST
2021
SET CONSTRUCTION @ KINO STUDIO LITHUANIA



DEAD SNOW II
2013
SET CONSTRUCTION @ STUDIO WAREHOUSE ICELAND



THE PLAYLIST
2021
SET CONSTRUCTION ON LOCATION IN CROATIA



LAKE OF DEATH
2017
SET CONSTRUCTION @ DAGSLYS STUDIOS NORWAY



MAX ANGER: WITH ONE EYE OPEN
2020
SET CONSTRUCTION ON LOCATION IN LITHUANIA



FLYKTEN TILL FRAMTIDEN
2015
SET CONSTRUCTION @ STUDIO FARES SWEDEN

3D ILLUSTRATIONS



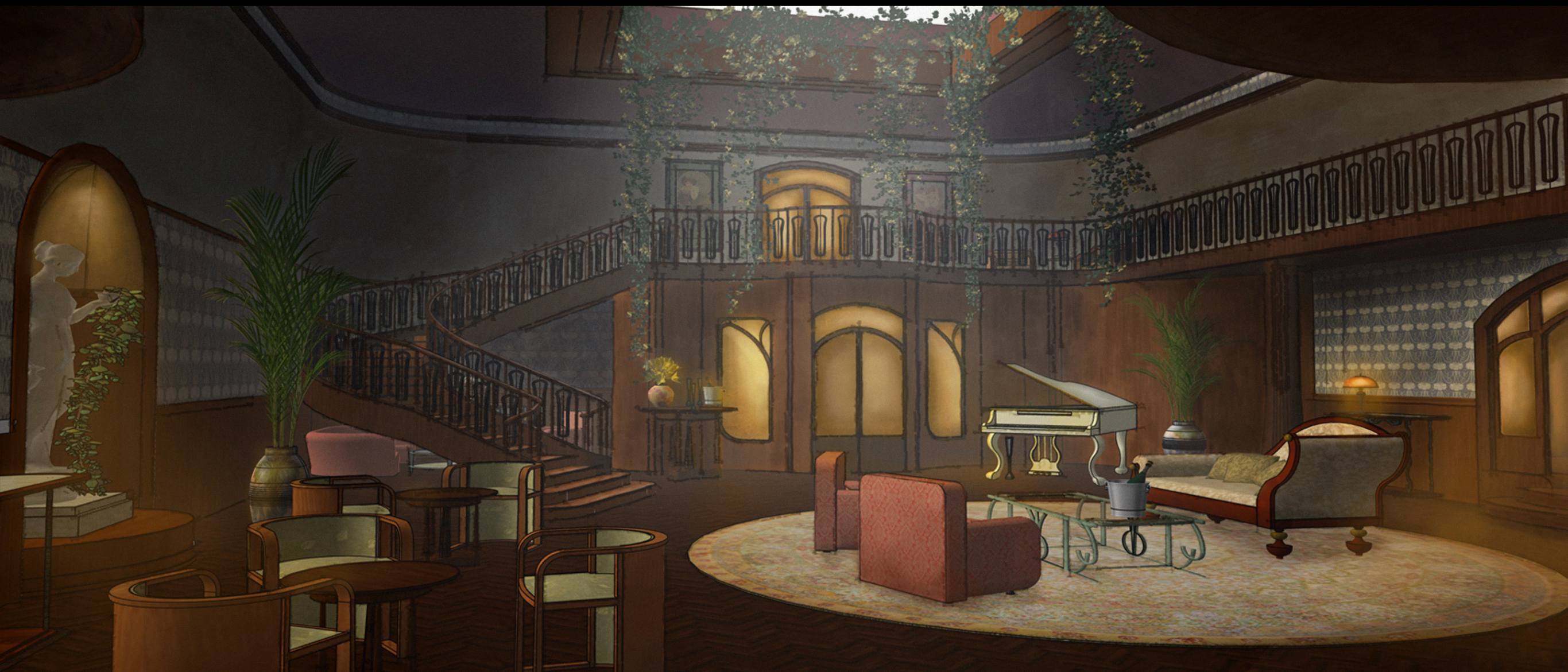
DO YOU SEE WHAT I SEE
2020
3D ILLUSTRATION FOR SET BUILD IN STUDIO



HIDDEN
2017
3D ILLUSTRATION FOR LOCATION VISUALISATION



THE PLAYLIST
2021
3D ILLUSTRATION FOR SET BUILD IN STUDIO



THE MAN WHO SAVED PARIS
2021
3D ILLUSTRATION PITCH FOR SET BUILD IN STUDIO



MAX ANGER: WITH ONE EYE OPEN
2020
3D ILLUSTRATION FOR SET BUILD ON LOCATION



HIDDEN
2017
3D ILLUSTRATION FOR LOCATION VISUALISATION



FLYKTEN TILL FRAMTIDEN
2015
3D ILLUSTRATION FOR SET BUILD IN STUDIO



HIDDEN
2017
3D ILLUSTRATION FOR LOCATION VISUALISATION



THE PLAYLIST
2021
3D ILLUSTRATION FOR SET BUILD IN STUDIO



MAX ANGER
2021
3D ILLUSTRATION FOR SET BUILD IN STUDIO

BEFORE & AFTER

LOCATION BEFORE



LOCATION AFTER



LOCATION BEFORE



LOCATION AFTER



MAX ANGER: WITH ONE EYE OPEN
2020
LOCATION LITHUANIA

LOCATION BEFORE



LOCATION AFTER



THE PLAYLIST
2021
LOCATION SWEDEN

LOCATION BEFORE



LOCATION AFTER



THE PLAYLIST
2021
LOCATION SWEDEN

LOCATION BEFORE



LOCATION AFTER



MAX ANGER: WITH ONE EYE OPEN
2020
LOCATION LITHUANIA

LOCATION BEFORE



LOCATION AFTER



MAX ANGER: WITH ONE EYE OPEN
2020
LOCATION LITHUANIA

3D ILLUSTRATION FOR SET BUILD IN STUDIO



SET STILL OF STUDIO BUILD



SKETCH FOR SET BUILD IN STUDIO



SET STILL OF STUDIO BUILD



SKETCH FOR SET BUILD ON LOCATION



SET STILL OF LOCATION BUILD



HIDDEN
2017
LOCATION HUNGARY

SKETCH FOR SET BUILD ON LOCATION



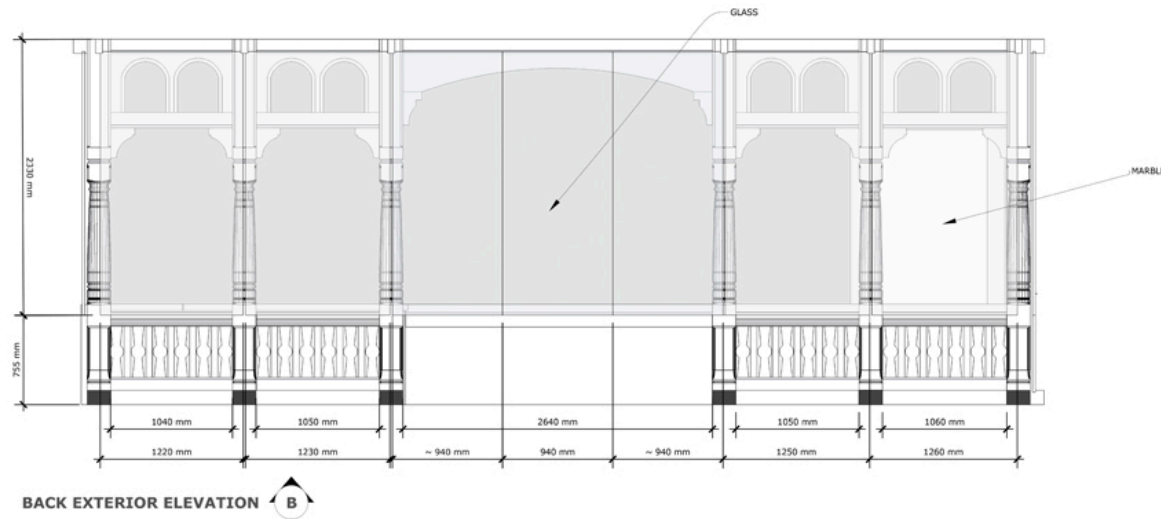
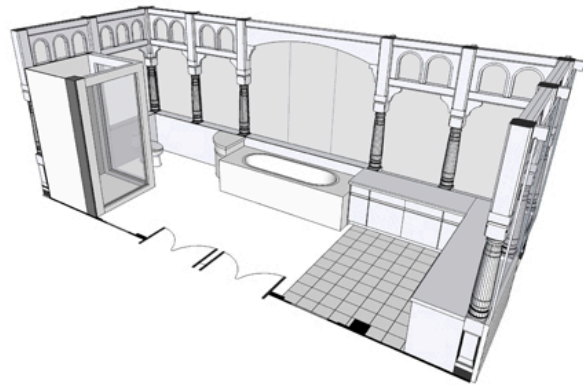
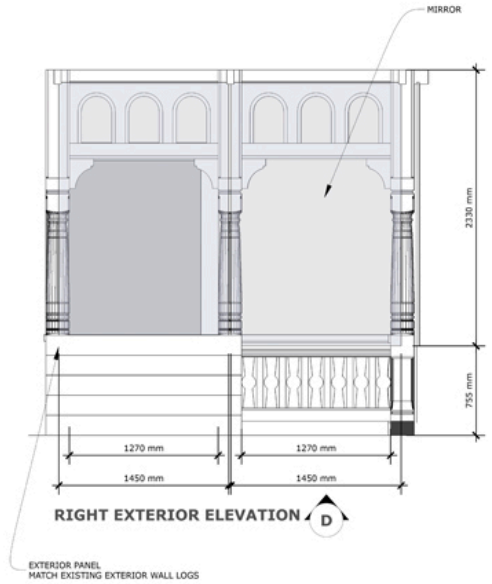
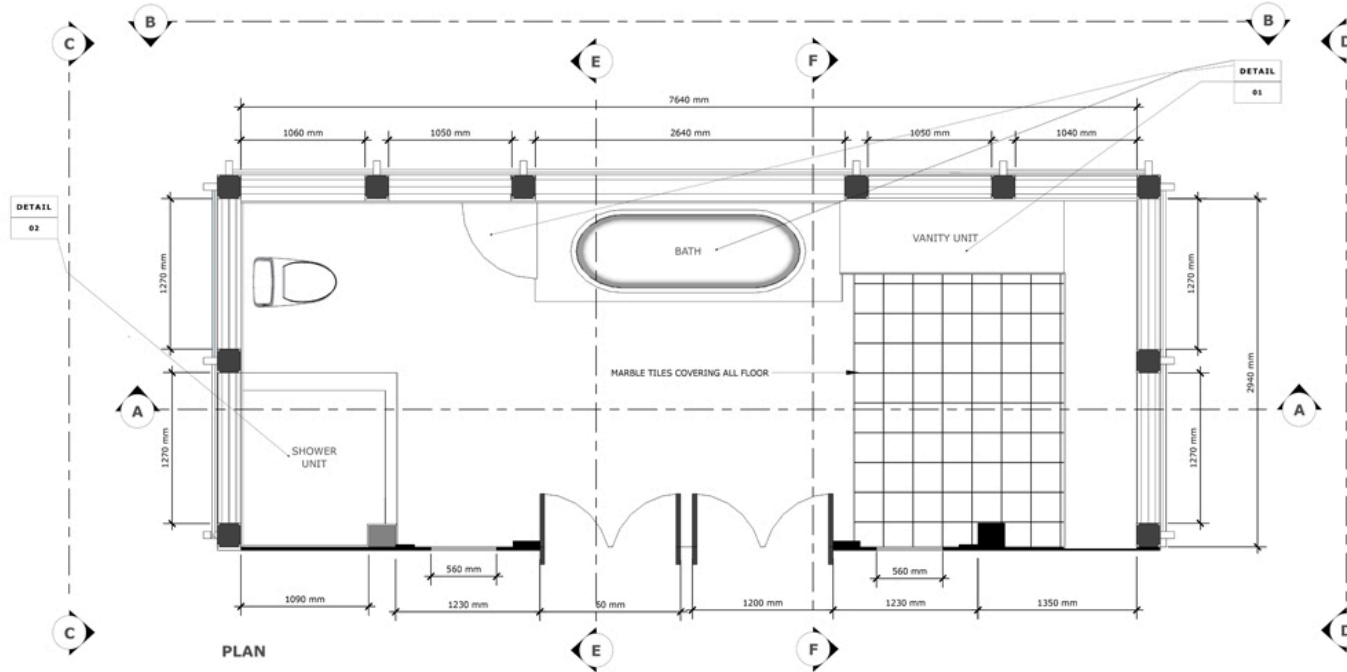
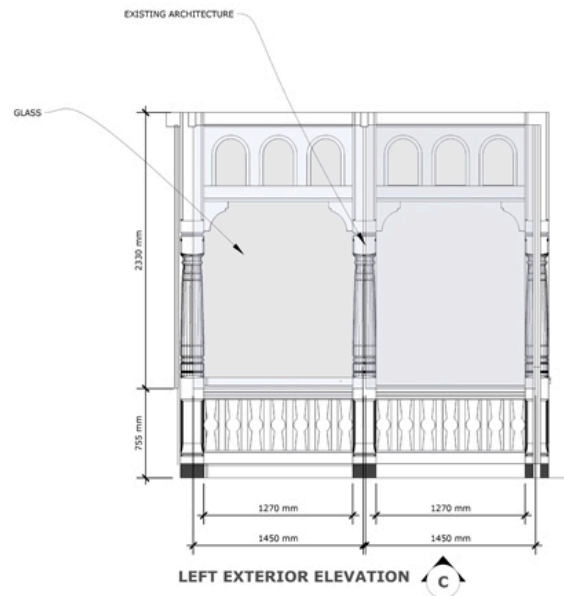
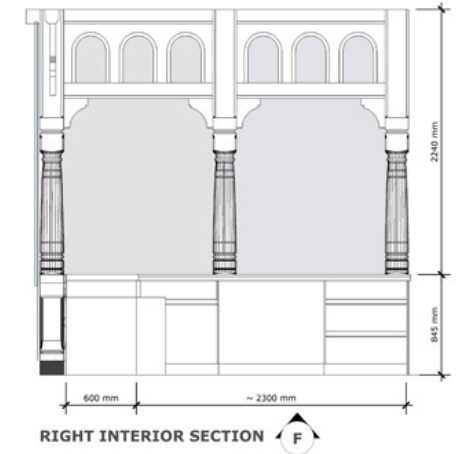
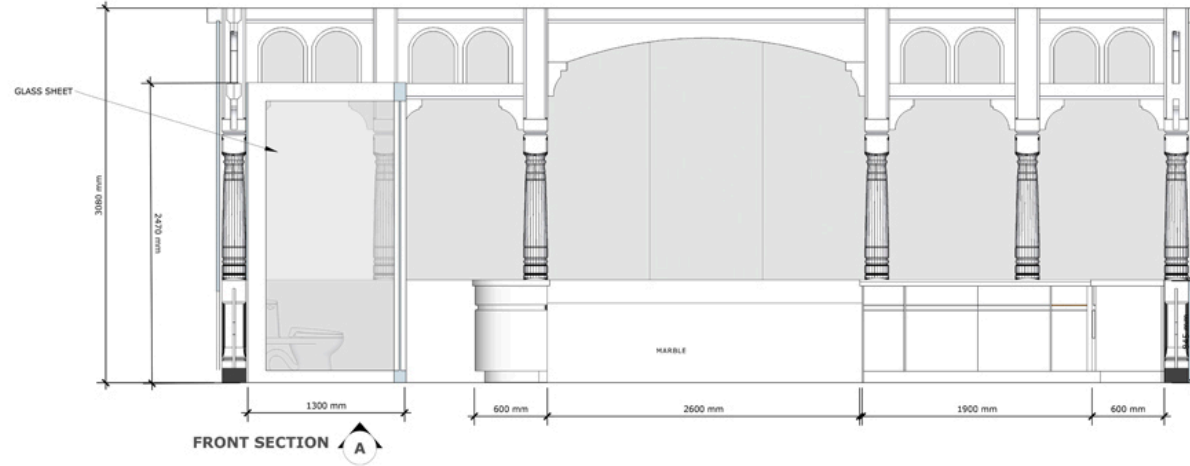
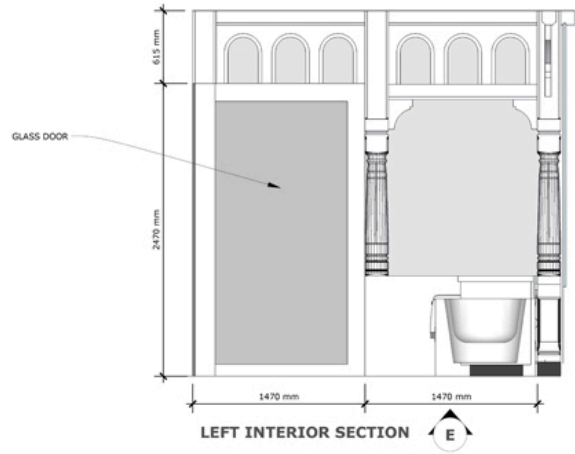
SET STILL OF LOCATION BUILD



MAX ANGER: WITH ONE EYE OPEN
2020
LOCATION LITHUANIA

TECHNICAL DRAWINGS

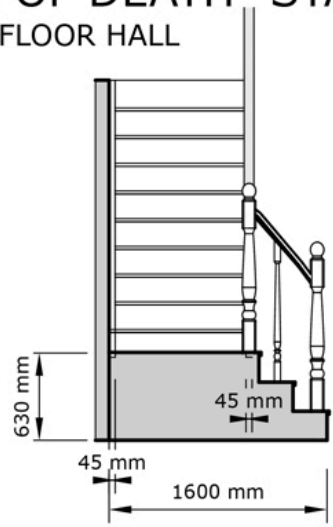
THE SNOWMAN - HOLMENKOLLEN HOTEL - STOPS BATHROOM - PLAN & ELEVATIONS @ SCALE 1:20



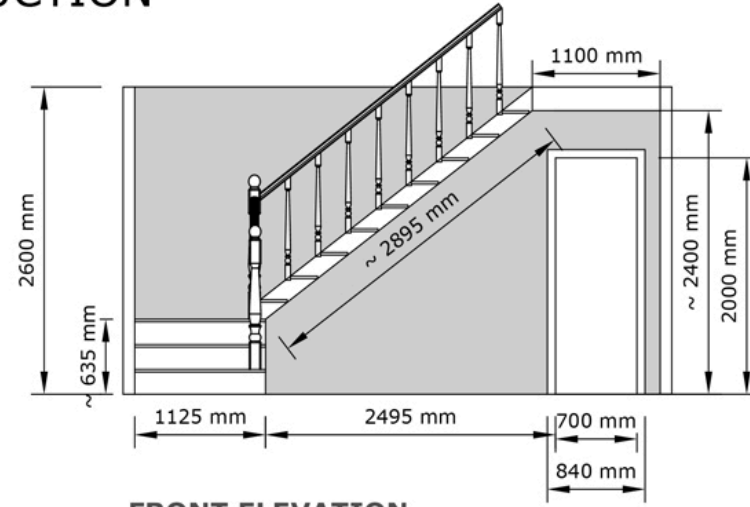
THE SNOWMAN		SET No.	DWG. No.
DRAPSMANN FILMS LTD.		218	01
SET:	STOPS BATHROOM	LOCATION / STAGE:	HOLMENKOLLEN HOTEL
DATE DRAWN:		NOV 17 2015	SCALE: 1:20
DRAWN BY:		LIV ASK	DATE ISSUED:
DATE ISSUED:		7 DEC	REVISED:
PRODUCTION DESIGNER: MARIA DJURKOVIC			
DIRECTOR:	ART DEPT:	CON. MANAGER:	RIGGERS:
PRODUCTION:	SET DECOR:	CARPENTERS:	SFX:
D.O.P.:	PROPS:	PLASTERERS:	VFX:
ASST. DIRECTORS:	PROP MAKING:	PAINTERS:	COMPUTER / VID:
STUNTS:	SIGN WRITING:	SCULPTORS:	COSTUMES:
GAFFER:	GRAPHICS:	METAL WORK:	
PRAC. ELEC.:	GREENERY:	SCENIC ART:	
HEALTH & SAFETY:	LOCATIONS:	DRAPES:	APPROVED:

"LAKE OF DEATH" STAIRCASE CONSTRUCTION

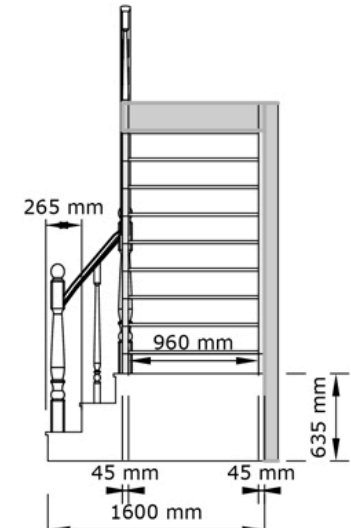
GROUND FLOOR HALL



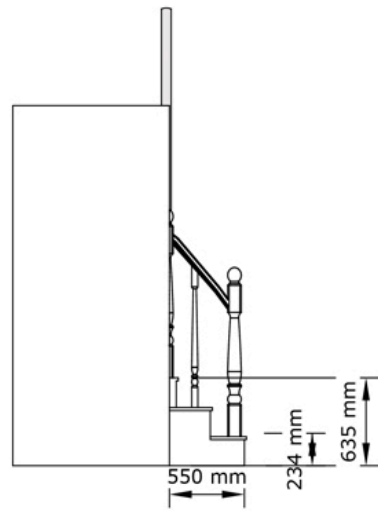
LEFT SECTION



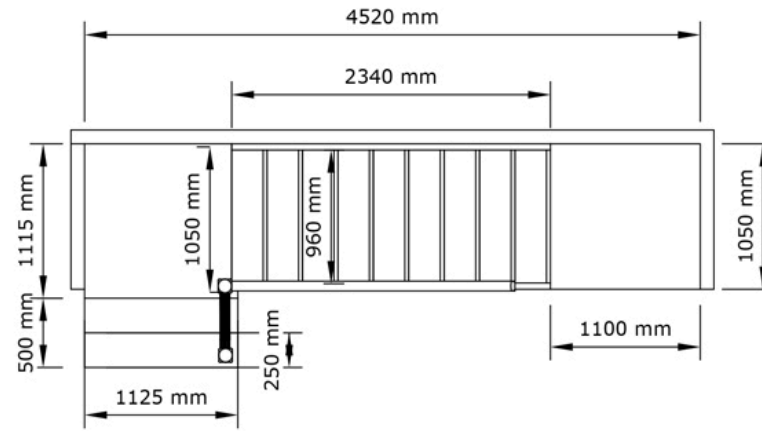
FRONT ELEVATION



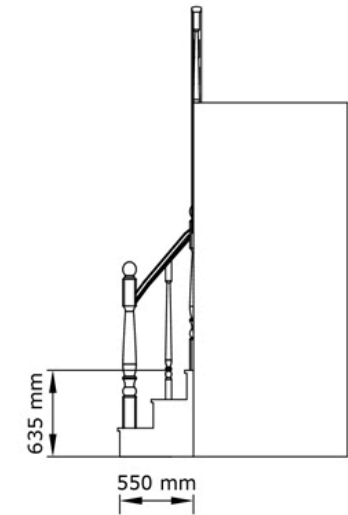
RIGHT SECTION



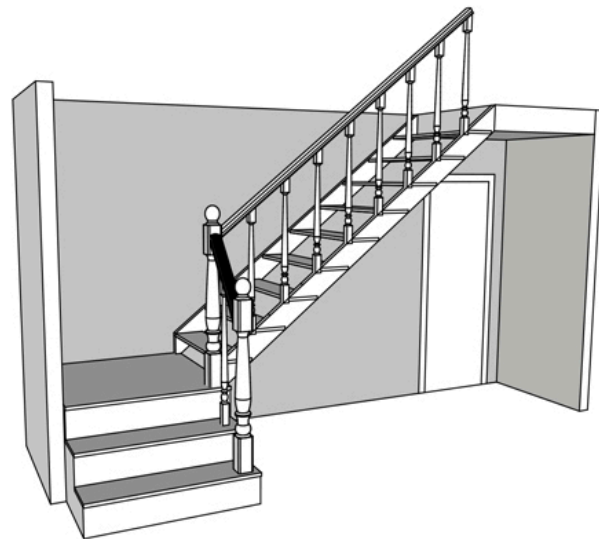
LEFT ELEVATION



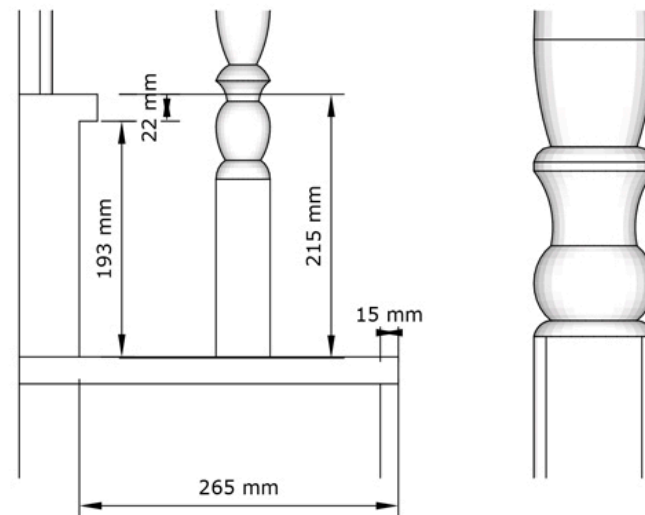
PLAN VIEW



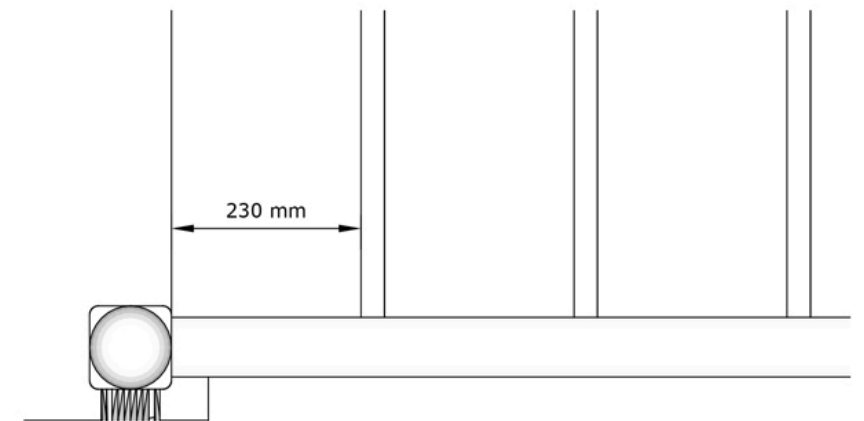
RIGHT ELEVATION



PERSPECTIVE

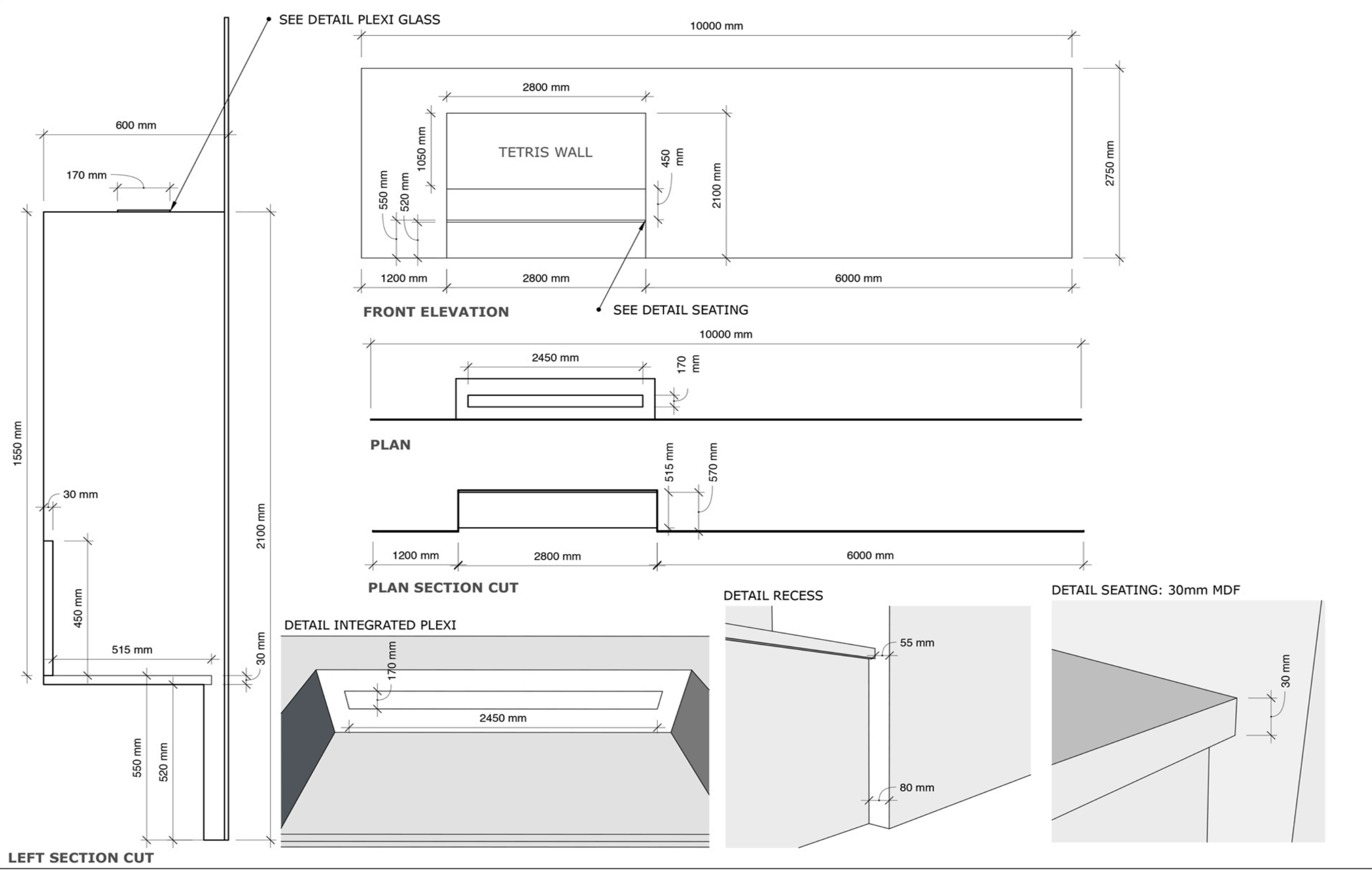


DETAIL I



DETAIL II

V.02 01.07.18
SCALE 1:50 on A3
LIV ASK



SET: INT. SPOTIFY HQ
LOCATION: STHLM 04

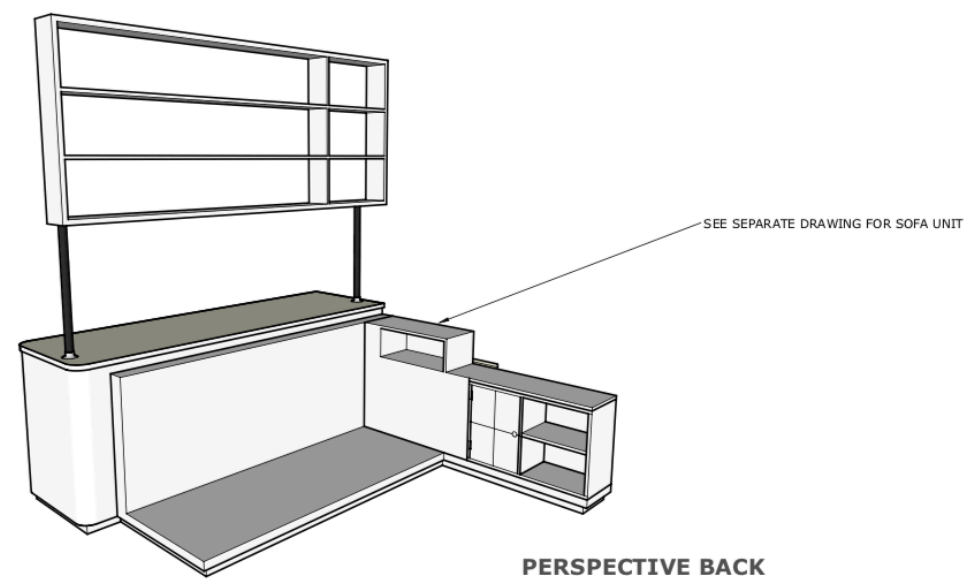
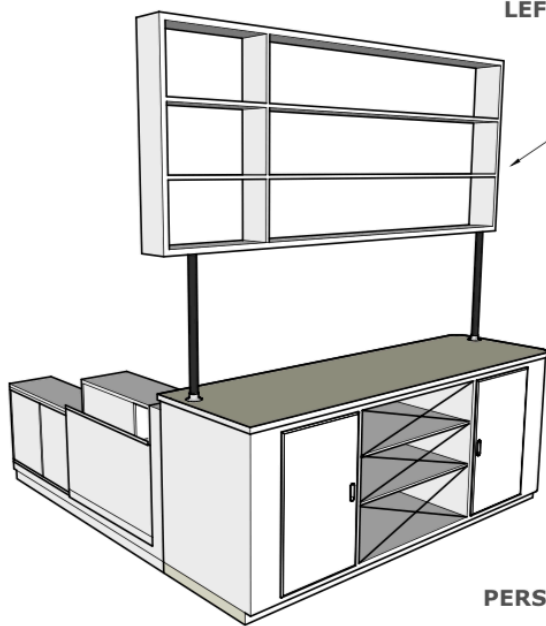
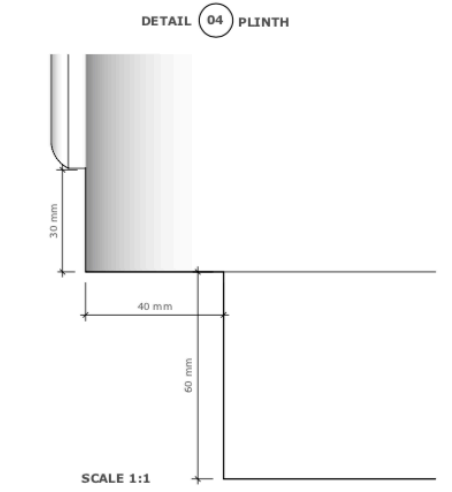
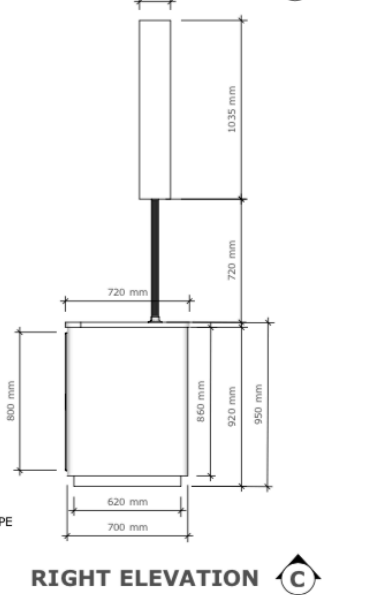
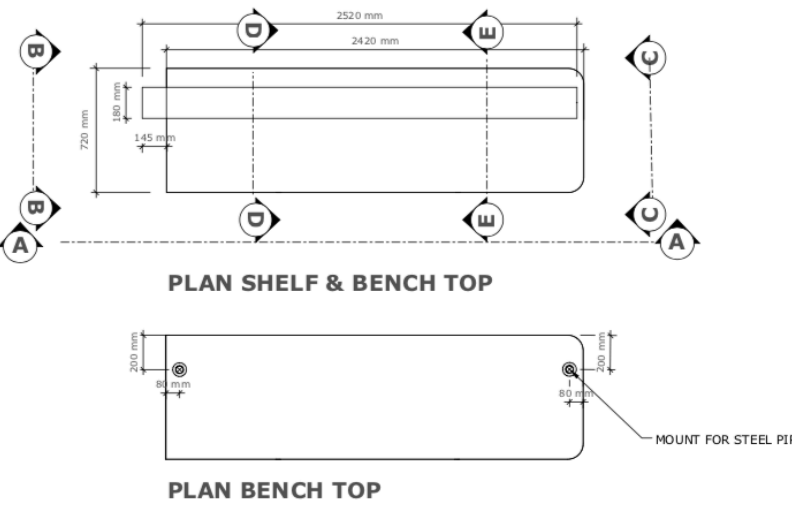
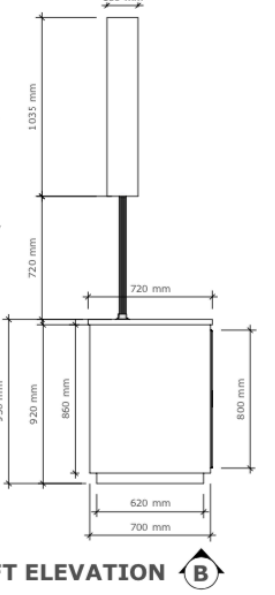
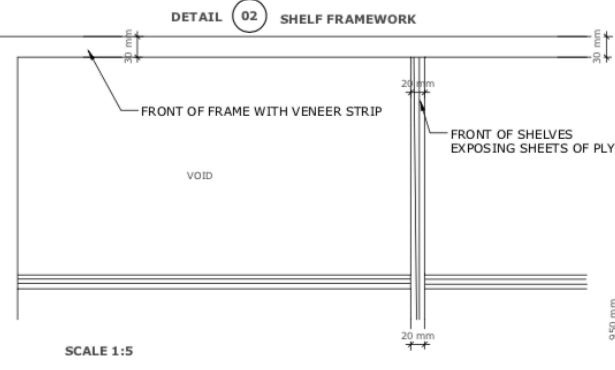
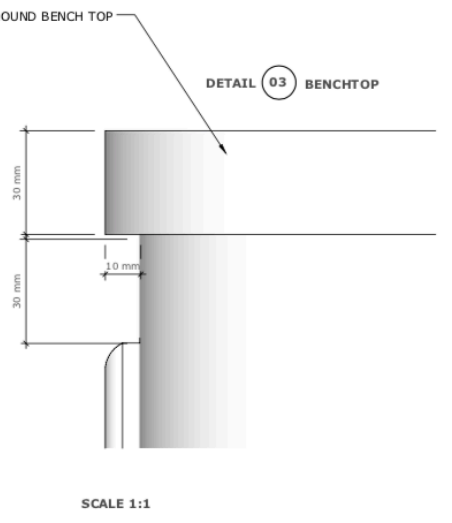
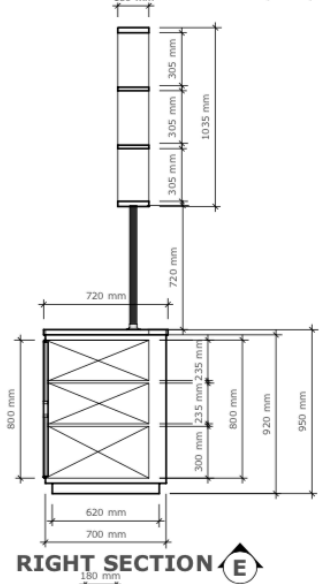
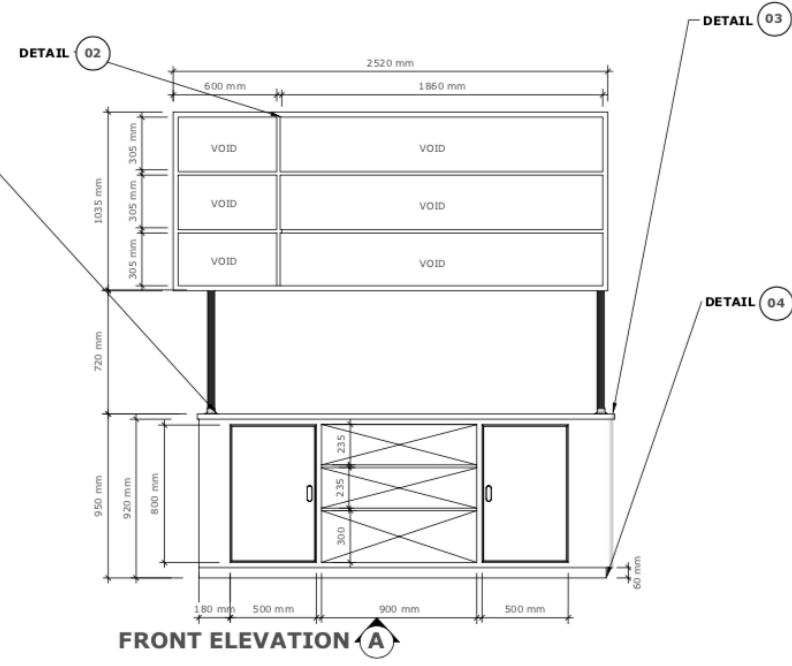
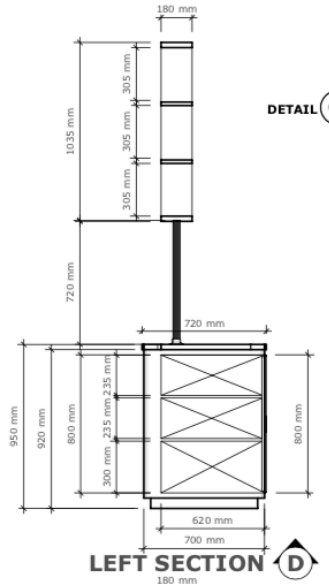
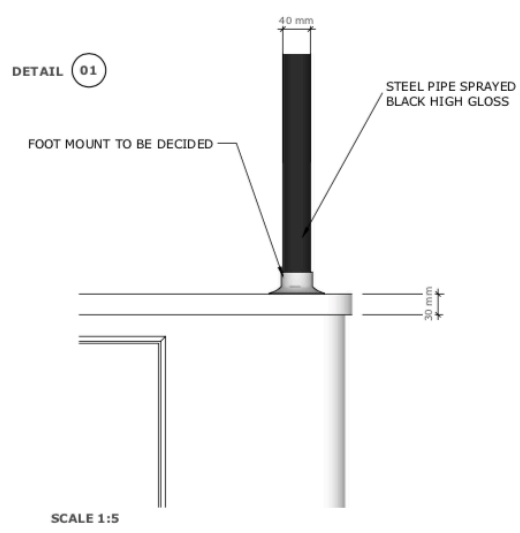
YELLOW BIRD

SPOTIFY UNTOLD

DATE	PRODUCTION DESIGNER LIV ASK
SCALE	1:100 on A3
NOTES	

A 03

THE SNOWMAN - HARRYS APARTMENT - KITCHEN ISLAND WITH SHELF @ SCALE 1:20



THE SNOWMAN		SET No.	DWG. No.
DRAPSMANN FILMS LTD.		126-128	001
SET: INT HARRYS APT KITCHEN/LIVING		LOCATION NY28	
DETAILS: KITCHEN ISLAND WITH OPEN SHELF UNIT		SCALE: 1:20 on A1	
DATE DRAWN: 8 DEC	DRAWN BY: LIV ASK	DATE ISSUED:	REVISED:
PRODUCTION DESIGNER: MARIA DJURKOVIC			
DIRECTOR	ART DEPT.	CON. MANAGER	PROSERS
PRODUCTION	SET DECOR	CARPENTERS	SFX
D.O.P.	PROPS	PLASTERERS	VPX
ASST. DIRECTORS	PROP MAKING	PAINTERS	COMPUTER/VID
SCRIPTS	SHOWWRITER	SCULPTORS	COSTUMES
SAFERS	GRAPHICS	METALWORK	
PRAC. ELEC.	GREENBERY	SCENICART	
HEALTH & SAFETY	LOCATIONS	CHAIRS	APPROVED:

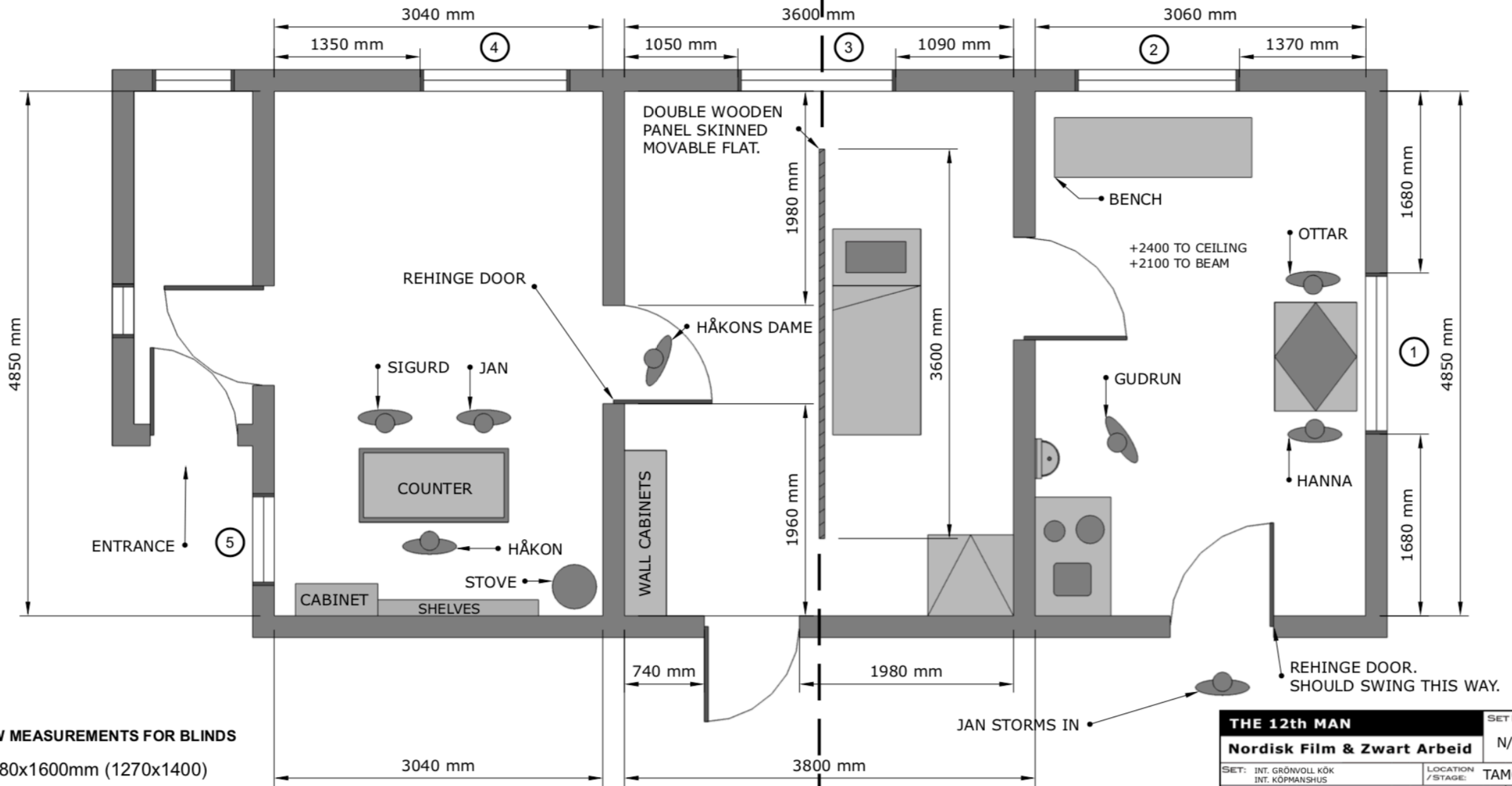
12th MAN

INT. KÖPMANSHUS - PLAN @ SCALE 1:40 on A3

INT. GRÖNVOLL KÖK - PLAN @ SCALE 1:40 on A3

INT. KÖPMANSHUS

INT. GRÖNVOLL KÖK



WINDOW MEASUREMENTS FOR BLINDS

- ① 1480x1600mm (1270x1400)
- ② 1480x1600mm (1270x1400)
- ③ 1480x1600mm (1270x1400)
- ④ 1480x1600mm (1270x1400)
- ⑤ 1000x1600mm (790x1400)

THE 12th MAN		SET NO.	DWG. NO.
Nordisk Film & Zwart Arbeid		N/A	2
SET: INT. GRÖNVOLL KÖK INT. KÖPMANSHUS		LOCATION / STAGE:	TAMOKDALEN
DETAILS:		SCALE: 1:40	
DATE DRAWN: 08.12.16	DRAWN BY: LIV ASK	DATE ISSUED:	REVISED:
PRODUCTION DESIGNER: Mikael Varhelyi			
DIRECTOR:	ART DEPT:	CON. MANAGER:	RIGGERS:
PRODUCTION:	SET DECOR:	CARPENTERS:	SFX:
D.O.P.:	PROPS:	PLASTERERS:	VFX:
ASST. DIRECTORS:	PROP MAKING:	PAINTERS:	COMPUTER / VID:
STUNTS:	SIGN WRITER:	SCULPTORS:	COSTUMES:
GAFFER:	GRAPHICS:	METAL WORK:	
PRAC. ELEC.:	GREENERY:	SCENIC ART:	
HEALTH & SAFETY:	LOCATIONS:	DRAPES:	APPROVED:

THANK YOU

CONTACT

Email: livask@gmail.com

Website: livask.com

Instagram: [iamlivask](https://www.instagram.com/iamlivask)

Represented by
THE TALENT GROUP AGENCY
<http://www.thetalentgroup.eu/>

Tove Halkiewicz
+46 70 958 42 40
tove@ttg.se